

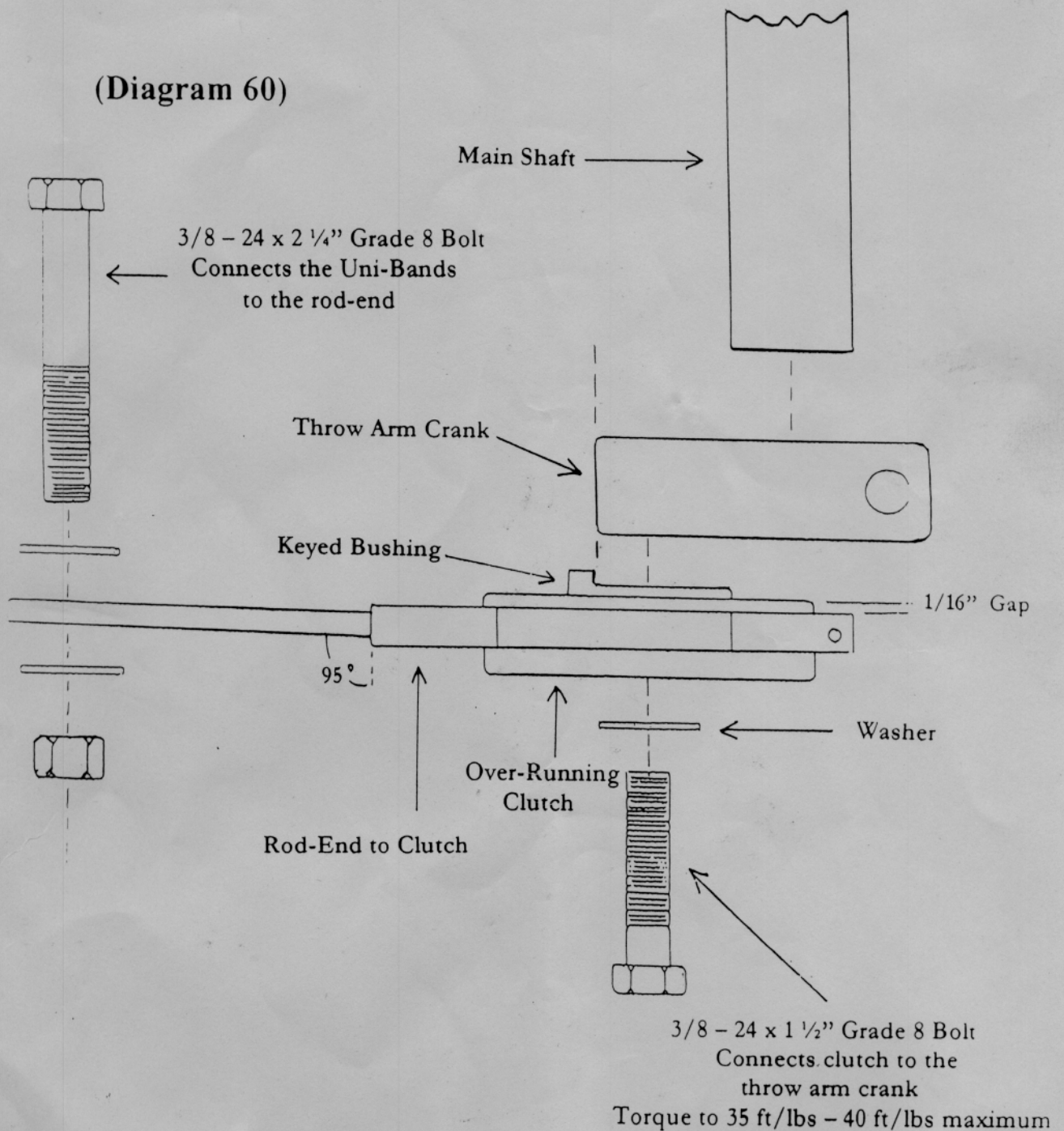
# INSTALLATION OF MAIN SHAFT CLUTCH

1. Release the throw arm and turn off the machine.
2. Move the throw arm so that it is  $6\frac{3}{4}$ " from the right hand corner of the throw plate. See Diagram 61.
3. Clamp a vise-grip onto the throw plate with the throw arm at  $6\frac{3}{4}$ " to prevent the throw arm from moving forward.
4. See Diagram 62. Do not loosen the throw arm crank bolt.
5. Remove the crank handle, the crank handle stand-off collar, the elastic lock-nut and the  $\frac{7}{16}$ " washer. Completely remove the existing Uni-Band assembly from the machine by loosening the rod-end bolt ( $\frac{5}{32}$ " hex head wrench). See Diagram 28. Pull down on the rod-end to remove. Remove the small ( $1\frac{9}{16}$ " OD) bearing and the two washers from the bottom of the throw arm crank.
6. Remove the clutch from the rod-end of the new Uni-Band assembly. Align the keyed bushing with the throw arm crank and use the included  $\frac{3}{8}$  - 24 x  $1\frac{1}{2}$ " Grade 8 bolt and one washer to fasten it. See Diagram 60. Hold back on the throw arm and torque the bolt to 35 ft/lbs. minimum -- 40 ft/lbs maximum.
7. Put the threaded rod-end through the hole in the frame, then pull the rod-end onto the clutch. Refer to Diagram 60 for proper positioning of the clutch within the rod-end (note  $\frac{1}{16}$ " gap). Lightly snug up the rod-end to the clutch using a  $\frac{5}{32}$ " hex head wrench, while keeping the rod-end level to the clutch.
8. Put the  $\frac{7}{16}$ " washer onto the threaded rod-end. Then screw on the elastic lock-nut. Refer to the section in the manual on *Setting Distance and Speed*, regarding spring tension and adjustment of the elastic lock-nut. Once the proper distance and speed have been set, re-attach the crank handle, stand-off collar and the crank handle.
9. Remove the vise grip from the throw plate.
10. Inspect the hydraulic hoses to make sure that the rod-end does not rub against them.

**WARNING:** Do not work on the hoses when the throw arm is cocked. The throw arm must be released and the machine turned off when performing any work on the Pat-Trap®.

11. Begin normal operation of the machine.

(Diagram 60)



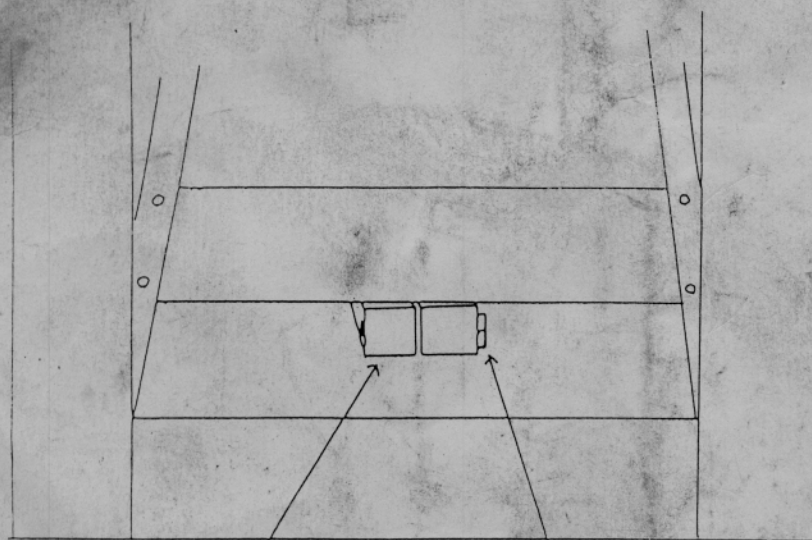
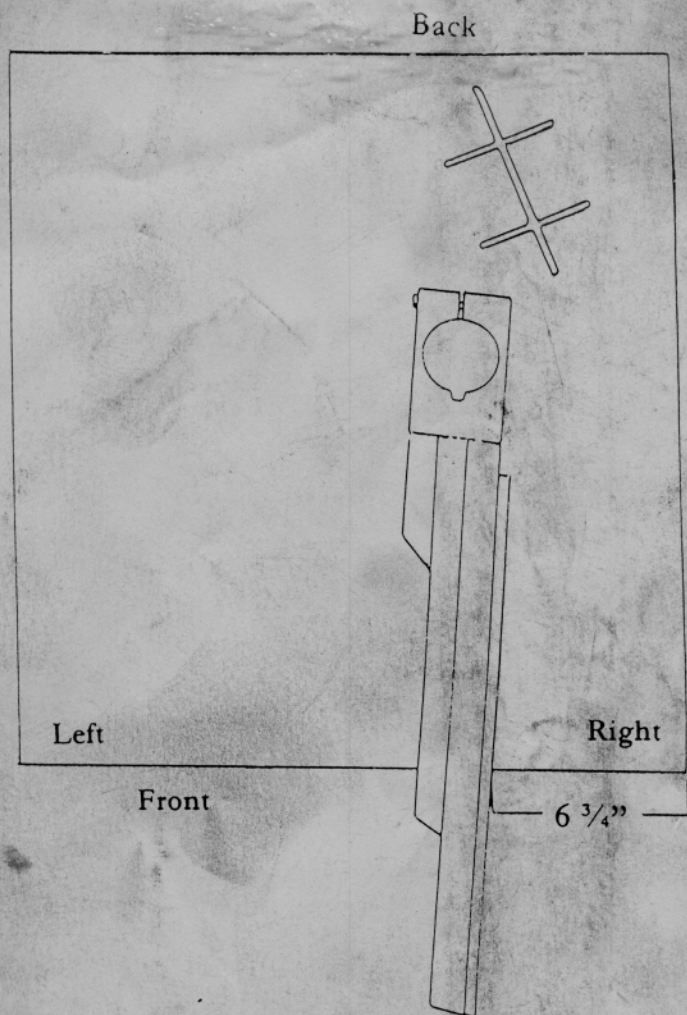
"G" Series

PAT-TRAP, INC., 110 Western Avenue, Henniker, New Hampshire 03242  
(603) 428-3396

G Rev. 9/02



(Diagram 61)



(Diagram 62)

Throw arm crank  
(Back view)

DO NOT LOOSEN or REMOVE

"G" Series

PAT-TRAP, INC., 110 Western Avenue, Henniker, New Hampshire 03242

(603) 428-3396

G Rev. 9/02